

# Li Tii pi li Kaafii



li tii



li kaafii



dilet



diloo



la krem



li seuk



li myel



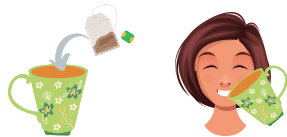
li zheu




Li kaafii oo baeñ li tii ki-nohtee-minihkwaan? →   
Ni-wii-minihkwaan li tii.



Keekway ee-miyeeeyihtaman avik toonñ tii? →   
Ni-miyeeeyihten li tii avik dilet pi li myel.



Ni-wii-oshihtaan li tii.  
Minihkweetaak li tii!

→  = por 1