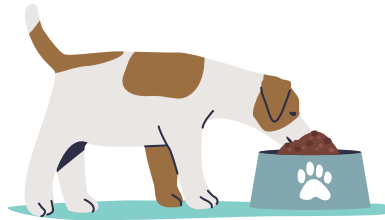


# More Pet Commands



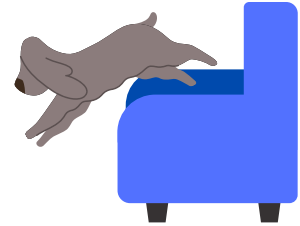
**Papaamohteetaak!**

Let's go for a walk! →



**Pee-miitsho!**

Come eat! →



**Nihtakoshii!**

Get down! →



**Kwaashkwahti!**

Jump! →



**Naata! / Naash! \***

Fetch! →



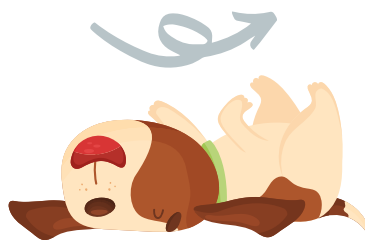
**Mishka! / Mishkaw! \***

Find it! →



**Nipoohkaasho!**

Play Dead! →



**Tihtipii!**

Roll over! →



**Meetaweetaak!**

Let's play! →

\* this command changes depending on if the object is "ooma" or "awa"

→ = said to one pet.