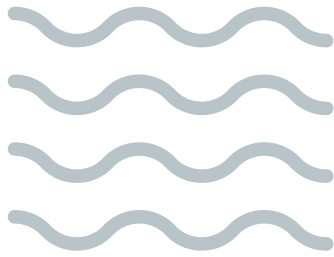


Taanshi Ee-Ishiweepahk?



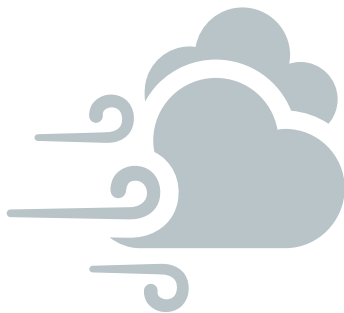
La-brem-iwan.



La-grel-iwan.



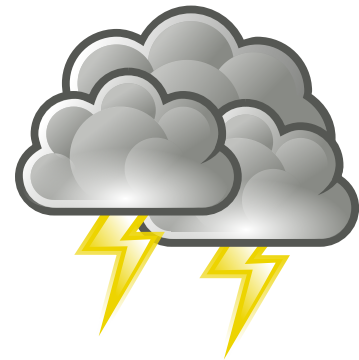
Kimiwashin.



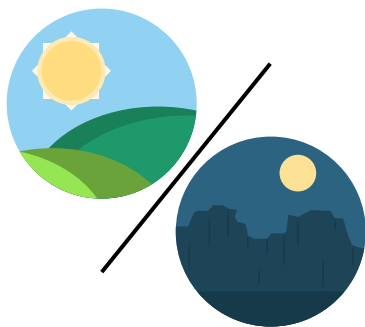
En taañpet di
vaañ ashteew.



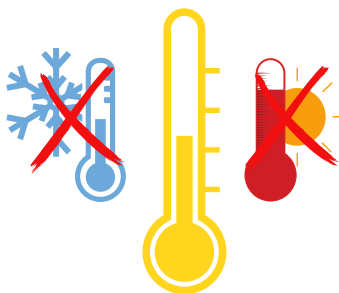
Aeñ nark aañ
syel ashteew.



En taañpet di
toneur ashteew.



Waasheeshkwan



Aapawaaw.



En podirii ashteew.