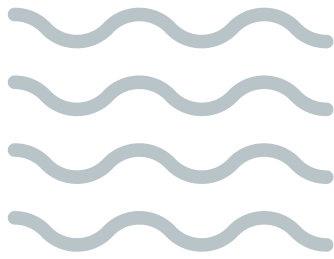


# Taanshi Ee-Ishiweepahk\*?

What's the Weather Like?



La-brem-iwan.  
*It is foggy.*



La-grel-iwan.  
*It is hailing.*



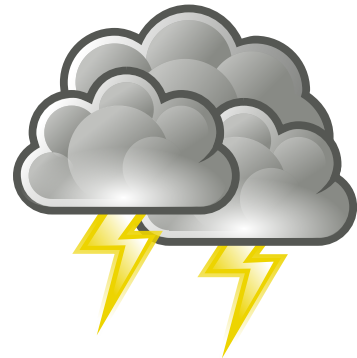
Kimiwashin.  
*It is drizzling.*



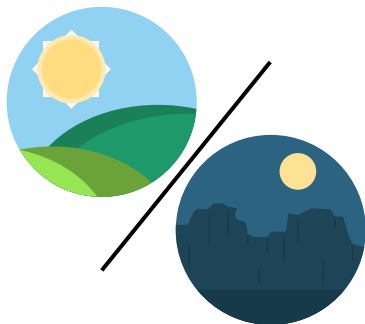
En taañpet di  
vaañ ashteew.\*\*  
*There is a windstorm.*



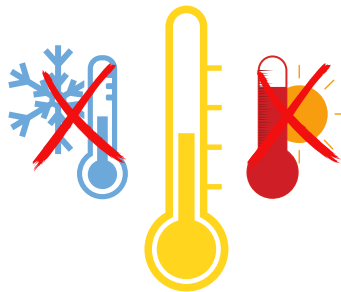
Aeñ nark aañ  
syel ashteew.  
*There is a rainbow.*



En taañpet di  
toneur ashteew.  
*There is a thunderstorm.*



Waasheeshkwan  
*It is clear out.*



Aapawaaw.  
*It is mild.*



En podirii ashteew.\*\*\*  
*There is a blizzard.*

\* note that "Taanshi ee-ishiweepahk?" and "Taanshi ee-ishikiishikahk?" are both ways of asking about the weather

\*\* "En taañpet di vaañ ashteew" and "Kischi-yootin" are both ways of saying there is a windstorm

\*\*\* "En podirii" is a blizzard. "En taañpet di niizh ashteew" and "Mishi-mishpon" are both ways of saying there is a snowstorm