

Ee-Kishkeeyitamiveehk pi Ee-Kishkishihk

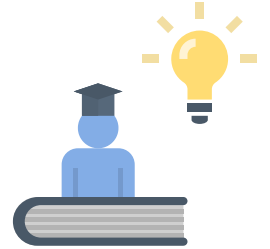


Ki-nishtohten chiiñ? →

Nishtohten.*

Noo nishtohten.

* nishtohten/ni-nishtohten

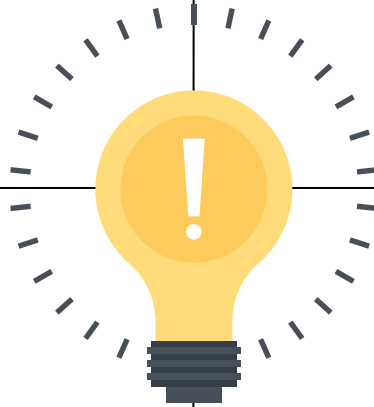


Kishkeeyihten* chiiñ? →

Gishkeeyihten.

Noo gishkeeyihten.

* kishkeeyihten/ki-kishkeeyihten



Kishkishin* chiiñ? →

Gishkishin.

Noo gishkishin.

* kishkishin/ki-kishkishin

Kii-wanihkaan chiiñ? →

Gii-wanihkaan.

Noo gii-wanihkaan.



→ = por 1