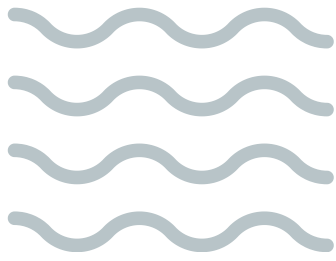


Taanshi Ee-Ishiweepahk*?

What's the Weather Like?



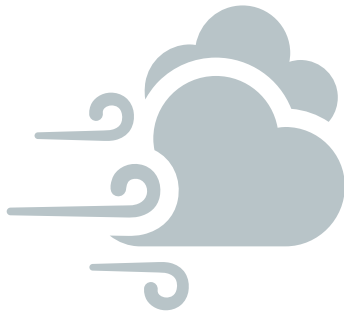
La-brem-iwan.
It is foggy.



La-grel-iwan.
It is hailing.



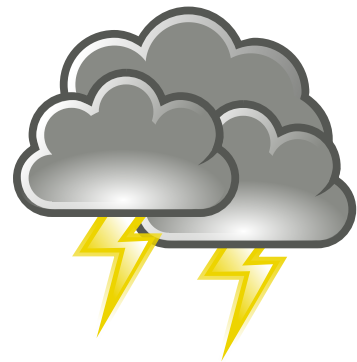
Kimiwashin.
It is drizzling.



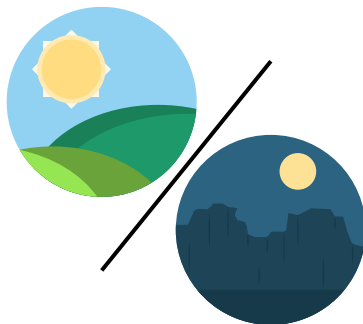
**En taañpet di
vaañ ashteew.****
There is a windstorm.



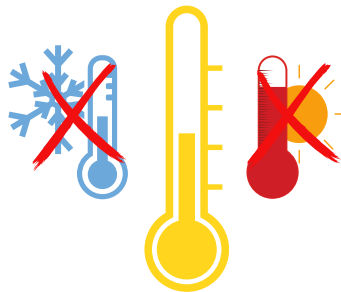
**Aeñ n'ark aañ
syel ashteew.**
There is a rainbow.



**En taañpet di
toneur ashteew.**
There is a thunderstorm.



Waasheeshkwan.
It is clear out.



Aapawaaw.
It is mild.



En podirii ashteew.***
There is a blizzard.

* note that "Taanshi ee-ishiweepahk?" and "Taanshi ee-ishikiishikahk?" are both ways of asking about the weather

** "En taañpet di vaañ ashteew" and "Kischi-yootin" are both ways of saying there is a windstorm

*** "En podirii" is a blizzard. "En taañpet di nizh ashteew" and "Mishi-mishpon" are both ways of saying there is a snowstorm