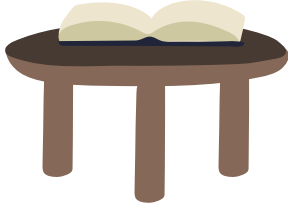


Taandee?

Taandee **li liivr?**
Diseu* **la taeb ashteew.**



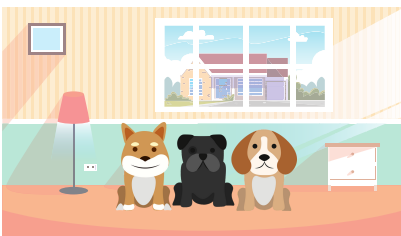
Taandee **mii klii?**
Didaañ **li chiirwee ashteewa.**



Taandee **la shayeer?**
Dahoor **ayaaw.**



Taandee **lii shyaeñ?**
Daañ** **la meezooñ ayaawak.**



Taandee **Isabella?**
Daañ **sa shaambr ayaaw.**



Taandee **Flora pi Thomas?**
Daañ **li park ayaawak.**



Taandee **ee-itohteyen?**
Daañ **li magazaeñ d-itohtaan.**



* diseu/daañ

** daañ/didaañ

La Meezooñ 1



Taandee moon minoosh?



Daañ la chwiizin ayaaw?
- Noo ayaaw.



Daañ la shaambr kaa-miitshohk ayaaw?
- Namooya. Noo ayaaw.



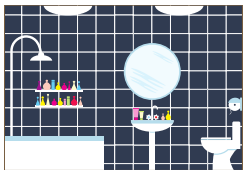
Daañ la salooñ ayaaw?
- Noo ayaaw.

La Meezooñ 2

Taandee mooñ minoosh?



Daañ la shaambr ita kaa-kawishimohk ayaaw?
- Noo!



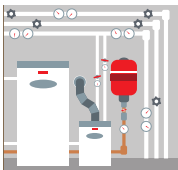
Daañ la plaas ita kaa-pakaashimohk ayaaw?
- Noo ayaaw!



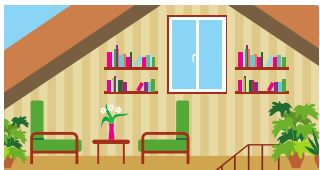
Daañ la shaambr por chi-kishiipeekinikeehk ayaaw?
- Noo!



Daañ la pchit shaambr por li maañzhii ayaaw?
- Noo ayaaw.



Daañ la kaev ayaaw?
- Noo ayaaw.



Daañ la shaambr ishpimihk ayaaw?
- Namooya. Noo ayaaw.



Daañ la shaambr por lii beebii ayaaw?
- Noo ayaaw.

La Meezooñ 3

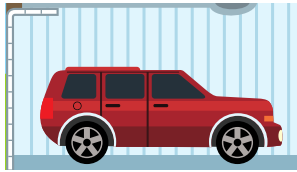
Taandee eetikwee ee-ayaat?



Daañ laafis ayaaw?
- Noo ayaaw.



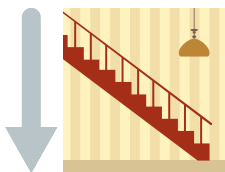
Daañ ita kaa-akooteehki lii bitaeñ ayaaw?
- Noo!



Daañ li garaazh ayaaw?
- Namooya. Noo ayaaw.



Aañleer ayaaw?
- Noo ayaaw.

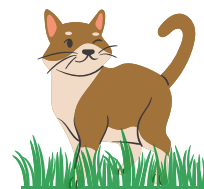


Aañbaa ayaaw?
- Noo ayaaw.

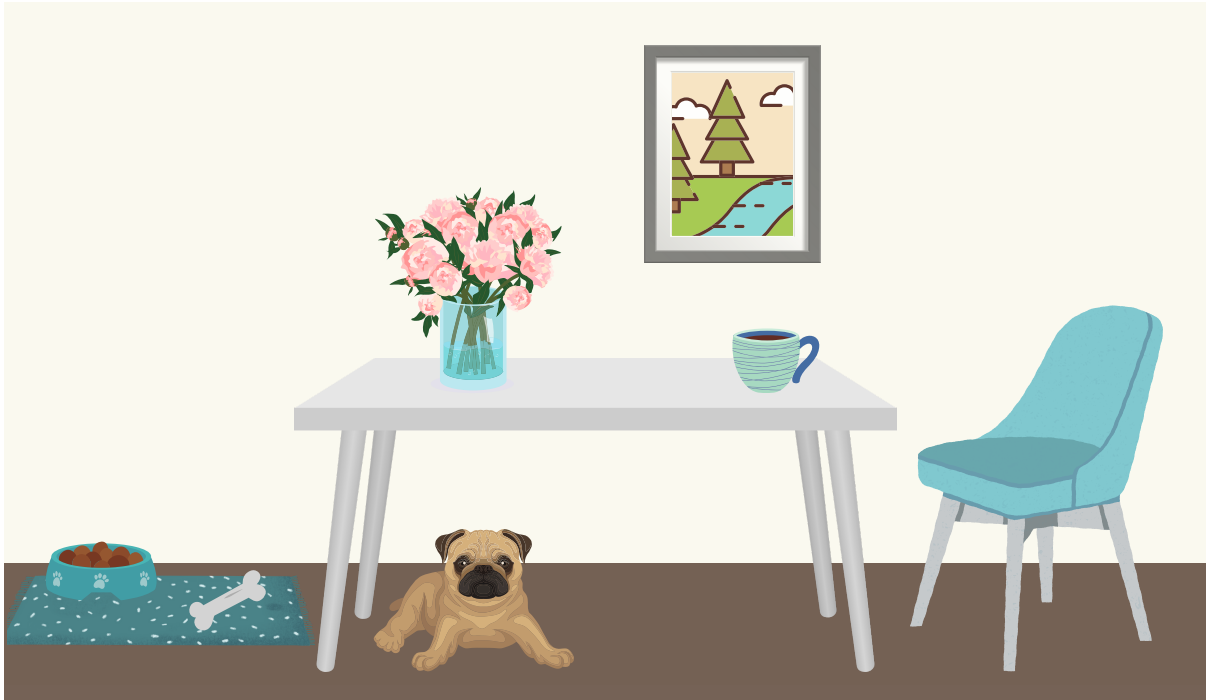


Dahor ayaaw?
Dahor alaañtoor la meezooñ ayaaw?

Wii! Gii-mishkawaaw!



Taandee Anima?



La bol diseu la taeb ashteew.

Li shyaen̄ disoor la taeb ayaaw.

La sheez akotii la taeb ashteew.

Li portree aañleer la taeb ashteew.

La taeb aañbaa li portree ashteew.

Lii fleur didaañ li pot di fleur ashteewa.

La bol di shyaen̄ araa li zoo ashteew.

Li zoo aañter li shyaen̄ pi la bol di shyaen̄ ashteew.